



THE LOTUS SEED

It's Never Too Late to Grow

JUNE 2021

LOTUS NETWORK®
SIGNATURE EXPERIENCE

Connect Now

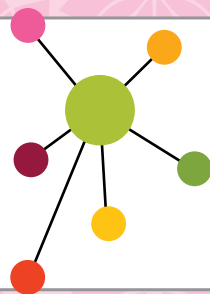


Spend an Extraordinary
Sunday Morning Virtually
with

MARIA SHRIVER

AUGUST 29, 2021

TITLE
SPONSOR
IRIS SMITH



CONNECTION CHALLENGE

This activity is a unique and creative way to connect with the Lotus community.

(learn about the challenge on page 2)

*"Only through our connectedness to others can we really know and enhance the self.
And only through working on the self can we begin to enhance our connectedness to others."*

- Harriet Goldhor Lerner



LOTUS LADIES

PERSONAL PROFILE: PAM HATCHER

Pam Hatcher has learned from experience that there is no such thing as growth in the absence of setbacks. Those lessons have come in the form of a strained relationship with a free-spirited, largely absent mother and the collapse of a long-term friendship and business partnership.

(read more on page 3)



EMOTIONAL BRAIN TRAINING

IT'S NEVER TOO LATE TO LEAD A STRESS FREE LIFE

With featured guest, Cynthia Lackner, MA

Ms. Lackner specializes in Emotional Brain Training, a modality which literally rewires the brain circuitry that drives addiction, anxiety and depression.

[CLICK HERE TO
LEARN MORE](#)

MARK YOUR CALENDARS FOR OUR JULY 13TH ZOOM-IN SESSION

Recovering from Pandemic Burnout

"It's Never Too Late to Heal Together" with featured guest Margit Cox Henderson, PhD

[CLICK HERE TO
SEE OUR HAPPENINGS](#)



INVITATION
TO FOLLOW,
BE ON THE
LOOKOUT!

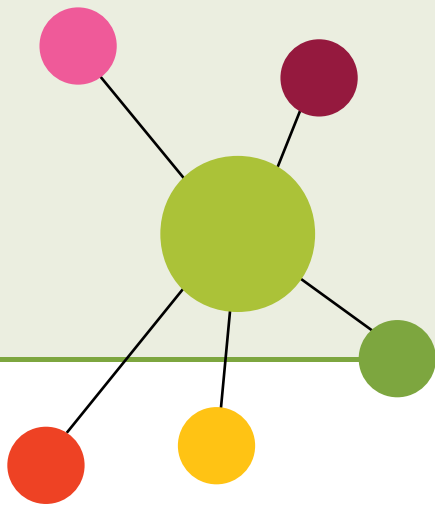
STEPPING OUT WITH LOTUS NETWORK

Do you love to take walks? Do you like to explore our city? Are you tired of the long COVID winter and in need of some fresh air and some good old-fashioned fun and socializing? Remember those days?

Lotus Network launched a series of three opportunities this summer to enjoy nature, have some fun, explore our beautiful mile high city and develop deep and meaningful connections through socially-focused walking. All walks will adhere to state guidelines for COVID-19 safety restrictions and requirements.

[LEARN MORE ABOUT
THE OUTINGS](#)





CONNECTION CHALLENGE

Find out people's favorites.

Make a point to find out and remember the favorites of people you love...ice cream flavors, coffee drinks, colors, or authors. Think of this like a little mental file you get to keep, just in case you ever want to offer them a perfect surprise, an unexpected pick-me-up, or a treat that makes them say, "How did you know?".

Better Together.

[Click here to see past challenges >](#)

We would love to hear about your experience around this challenge. Please send us an email at: LotusSeed@lotusnetwork.org





LOTUS LADIES

PERSONAL PROFILE

*Pam Hatcher, who bravely volunteered to share her story as our fifth Lotus Ladies Personal Profile, is the embodiment of one of the core values of Lotus Network: **It is never too late to become the person you always wanted to be.** We hope that her story will inspire you to share your own story or nominate someone else whose story deserves to be heard... we believe they all do!*

Pam Hatcher

You Can't Grow if You Don't Fail

Written for Lotus Network by Jessica Redmond of *Storyteller*

Pam Hatcher has learned from experience that there is no such thing as growth in the absence of setbacks. Those lessons have come in the form of a strained relationship with a free-spirited, largely absent mother and the collapse of a long-term friendship and business partnership. While both created stress and hardship, they also helped shape Pam into the businesswoman, partner and mother she is proud to be today.

Pam was born in Washington DC to a father who worked in the Senate and an artist mother. When Pam and her younger sister were small, the foursome relocated to Austin, TX to be closer to extended family. Pam's father continued to work in DC and was a rare presence in their home, leaving Pam and her sister subject to the whims of their unpredictable mother. Pam often wished she had a different kind of mom, a mom who was like everyone else's. Instead, hers was the kind of mom who went vegan before vegan was cool, gave away every cent she made, and threw herself into myriad causes while simultaneously paying scant attention to the daughters she had at home. Then, when Pam was only 12, her mother made the sudden announcement that she was leaving the family.

Pam's father, having grown up in a traditional, Southern culture and accustomed to spending most of his waking hours at his office, had no idea what to do with two young girls. He relocated the family to his hometown of Fayetteville, Arkansas and soon remarried, but the marriage fell apart in short order. Once again, Pam and her sister were left to fend mostly for themselves, dealing with the fallout from their mother's absence as best they could.

Pam spent summers at the lake and weekends at parties at the ends of cul-de-sacs. There were suppers of fried chicken and southern biscuits, fried okra and sweet tea shared with comforting Southern gentility, yet Pam chafed against the narrowness she often encountered there. Life in a small Southern town felt constricting in ways she couldn't quite put her finger on; all she knew for sure was that it was not where she wanted to be forever.

Pam went off to college, intending to use her degree to pursue a career in advertising, and was lucky enough to find a job with a small advertising company after graduation. The company was run by a young husband and wife team who freely turned over many responsibilities to Pam, a quick study and a hard worker. Soon Pam, along with a close friend and co-worker, decided to take on even more; they started a business together

Pam Hatcher *(continued)*

selling stationery and party supplies. Pam was working ten to twelve-hour days six or seven days a week, but she was young and single and motivated; the long hours didn't bother her a bit.

Eventually, the business grew too much to keep up with her day job, so Pam and her partner left the ad company and struck out on their own. The business quickly expanded from a two-person operation with a shoestring budget to a \$12 million company with over 100 employees. Pam moved to Denver, fell in love and got married. Life seemed to be going along perfectly according to plan, but there were cracks below the surface that would soon make their presence known.

For years, Pam had ignored an increasing imbalance in her role in the company compared to that of her partner. Long simmering resentments boiled over when the real estate deal Pam had signed onto blindly with her business partner went belly up, leaving in its wake a ruined friendship and partnership along with dizzying legal and financial consequences.

Prior to the collapse of the business, Pam had been forced into another kind of reckoning. Her mother, always a sporadic and unsettling presence in Pam's life, died suddenly of complications from the flu. At the hospital, Pam watched, dry-eyed, as a woman close to her own age sobbed over the loss. It occurred to Pam that this distraught woman was far more like the daughter her mother had probably wanted Pam to be. Neither she nor her mother had been who the other wanted them to be and somehow, that realization allowed Pam to extend a grace to their mother-daughter relationship that she had never found before. Her mother had been the only mother she was capable of being. It was time, she realized, to accept that and to make sure that when her turn came to be a mother, she did it very differently.

So too, Pam has come to believe, were the lessons to be learned from her collapsed business relationship. She is a far savvier businesswoman now than she once was, having learned the hard way about the importance of due diligence, even among friends, and the necessity of personal guarantees. Pam has taken those lessons and applied them to her latest venture, a home, party and gift supply business started in 2018 called Design Click. There were tough times to weather during the Covid shutdowns, but the business survived and, with the return of social gatherings at last, is poised to thrive.

Pam believes she has found that elusive balance between work and home, scaling back travel and management responsibilities to make sure she is there for her two teenage sons, while still finding professional fulfillment. The path of Pam's life has not always been certain or easy, but she has been able to turn the challenges and missteps into opportunities for growth, becoming the resilient, empathetic, fully present person she is today.

[*Click here to read more about our previous Lotus Ladies >*](#)

**To nominate a Lotus Lady, email us at:
LotusSeed@lotusnetwork.org**



Special thanks to our growing list of 2021 sponsors:

Helene & Marshall Abrahams
Jaime Altman
Dr. Lauren Miller Apple
Elaine & Richard Asarch
Henry C. & Karin J. Barkhorn Foundation
Bender West Foundation
Brooks LTD
Rachel & Mark Brown
The Chotin Foundation
Robin & Steve Chotin & Family

Lisa & Shell D. Cook
Corcoran Perry & Co.
Vicki & David Dansky
Nancy Deifik
HealthONE
Jocey Kraus
Mindy Miller
Julie & Brent Morse
Northern Trust
Vicki & Ken Pepper

Essie Perlmutter
Lisa & Jay Perlmutter
Lisa & Jonathan Perlmutter
Lisa Rogoff
Jane E Rosenbaum
Iris Smith
Lori & Lou Sigman
Stephanie & Sam Zaitz

If you are interested in becoming a sponsor and supporting
Lotus Network, please contact
Rachel Brown at (303) 328-7955 or email her at: LotusSeed@lotusnetwork.org

Our mission:

Lotus Network provides opportunities for women to create
meaningful connections, personal growth, and
purposeful living through social and educational resources.

**CLICK HERE TO
BECOME A MEMBER**



LOTUS NETWORK®